

MICRO-OHMMETERS

LOG OM

SETUP and DOWNLOAD Your data from OM21 and OM22

LOG OM IS the software tool to program and read data from AOIP micro ohmmeters.

It works with Windows 95, 98 XP and 2000 versions

It allows full configuration of the functions included in OM.

Download and data reading of stored values.

Recorded values are displayed as list or curves, and exportation to spreadsheets is an included functionality.

For OM22, it allows configuration of the 6 internal programs.



Programming

Configuration 'Cnf1'

Current / Range | Measurement cycle / Memory | Limits | Temperature | Miscellaneous

Current: 100 μ A | Continuous | Range: 200 Ohm | ☒ Auto

Reference voltage: 100 mV | Reference resistance: 100 kOhm

Current/range: Select current value, waveform and range.

OK | Annuler | Appliquer | Aide

Configuration 'Cnf1'

Current / Range | Measurement cycle / Memory | Limits | Temperature | Miscellaneous

Measurements count: 0 | ☒ no limit

Delay after start: 0,5 s

Current settling time: 0,5 s

Delay between measurements: 1 s

Memory recording: ☐ On

Memory: Data acquisition, recording, current frequency, establishing time,...

OK | Annuler | Appliquer | Aide

Configuration 'Cnf1'

Current / Range | Measurement cycle / Memory | Limits | Temperature | Miscellaneous

Limits: ☒ On

Limit 1: Value 11000 Ohm | Level: ☐ Low ☒ High

Hysteresis: 100 Ohm

Limit 2: Value -100 Ohm | Level: ☒ Low ☐ High

Hysteresis: 1 Ohm

Limits/alarms:

OK | Annuler | Appliquer | Aide

Configuration 'Cnf1'

Current / Range | Measurement cycle / Memory | Limits | Temperature | Miscellaneous

Temperature compensation/ Heating Measurement: Resistance @ 20 °C

Ambient temperature: Measured

Measurement Period: 25 s

Temperature coefficient: 0.3931 % / °C <Cu> 0.4 % / °C

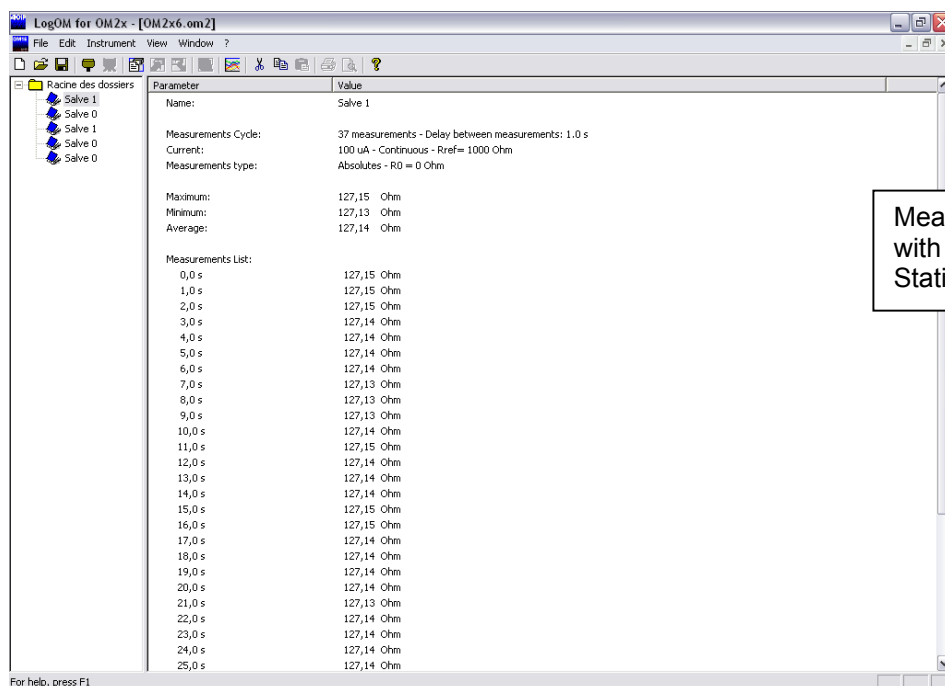
Rt Memory selection: Auto

Temperature: Calculation of resistance at 20°C, coil heating calculation,

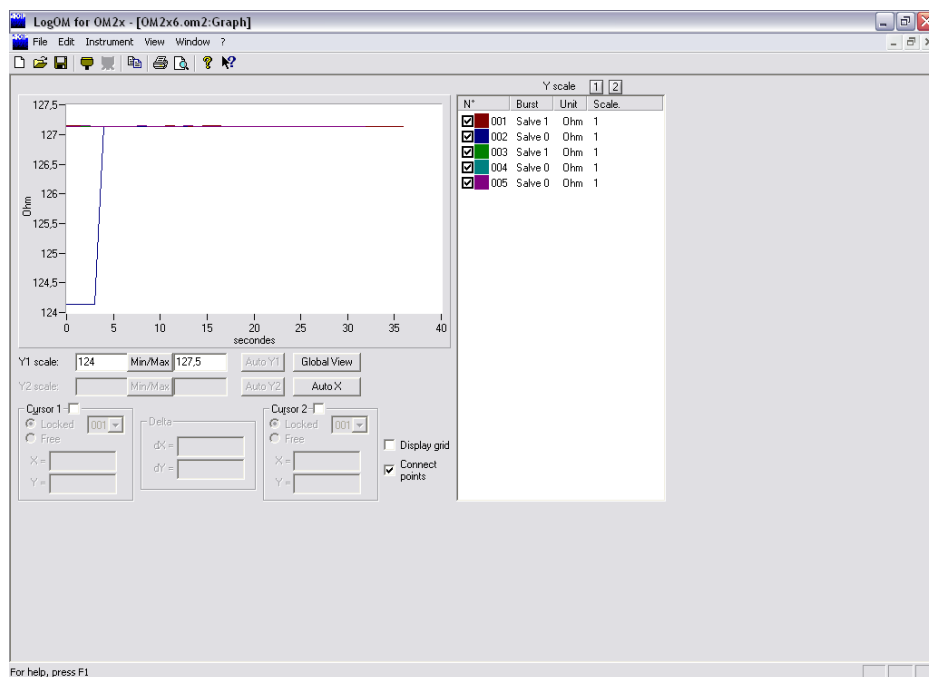
OK | Annuler | Appliquer | Aide

LoW Resistance Measurement

DATA DOWNLOAD AND EXPOLITATION



Measuring Burst management,
with name directories.
Statistical functions



Curves of data for advanced
analysis.
Scaling and zoom functions,
markers



AOIP
BP 182
91133 Ris Orangis CEDEX
FRANCE
+33 169 028 900
www.aoip.com



The above mentioned characteristics are subject to change without prior notice

SOFIMAE laboratory on our premises of Ris-Orangis
*Ranges available on www.cofrac.fr